

Introduction to Sociology

SOC 101 | GEP: SS, USD | Dr. Helena Alden | Sections 1, 2, 4

Class Highlights

- Explain how class, race and gender condition social relations and affect life chances
- Distinguish between personal troubles and public issues
- Access, use and evaluate ways sociologists have explained social behavior
- Identify ways in which historical and social forces influence personal biography



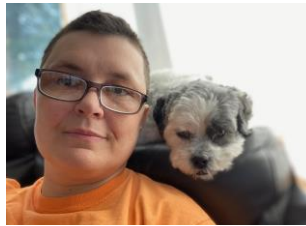
Class Information

This course will be offered online through Zoom and Canvas with all materials available asynchronously so that students can access them at any time, and with regular synchronous meetings throughout the semester held during the scheduled course days and times posted on the UWSP Timetable. Lectures will be pre-recorded and posted on Canvas; our virtual (online) synchronous meetings will be a chance for me to share additional information and resources, for additional class discussions and questions, and to make sure you are not falling behind or losing your way in the course.

Instructor Contact Info

Name: Helena Alden, Ph.D

Email: halden@uwsp.edu



Instructor Details

I received my Ph.D. and master's degrees in sociology from the University of Florida. I also hold a bachelor's degree in criminology from the University of South Florida.

Text and Materials:

Newman, David. *Sociology: Exploring the Architecture of Everyday Life Brief Edition 5th ed.*

Newman, David. *Sociology: Exploring the Architecture of Everyday Readings 10th ed.*

These books are available through text rental

Class Description

CLASS

Contents

Sociology is defined as the systematic study of human society. For the purposes of class, our goal is to achieve a level of scholarly understanding of our everyday social worlds. As we start to examine, and ultimately question, the social forces impacting our lives, we will see how the 'life we take for granted' – from the simple act of saying hello to the complicated business of politics and government – is all part and parcel of our cultural and social identity. Food, housing, hobbies, music, knowledge, love, sports teams (Go Gators!), crime, families, race, social class, abilities, sex, gender (and many more) are all subject to the same forces and form part of the subject material open for us to study this semester.

The most important lesson of the class concerns the relationship between the individual and society. To examine this, we will investigate how structural forces such as race, class, gender, poverty, crime, etc. impact our day to day lives. We will also explore possible theoretical explanations for the existence and influence of these social conditions. Given the nature of the subject matter, you may recognize your life in the class, you may get upset or angry, you may be inspired, and you may come across new social arenas you haven't encountered before – that is the way sociology works! Since the focus of the class is on everyday life, you have much to contribute to one another and also to me, **which I strongly urge you to do.**

Assessment	-----pg. 2
Policy	-----pg. 3
Resources	-----pg. 4
Schedule	-----pg. 5



Tired of looking at the stars, Professor Jenkins takes up sociology.

Assessment Information

Assessments

A variety of assessment strategies will be used in the classroom to determine a student's level of understanding. Some examples include: short answer exams, movie analysis and theory application.

Tests (75%)

There are three short answer/essay exams in this class. Each exam is open note and open book. They are due as follows:

1. Week 6 (Friday 5pm)
2. Week 11 (Friday 5pm)
3. Finals week (Friday 5pm)

Assignments (25%)

There are a series of assignments over the course of the semester. These are complete/incomplete (pass/fail). The due dates will be available with the corresponding module.

Grading scale

93-100	A
90-92	A-
87-89	B+
83-86	B
80-82	B-
77-79	C+
73-76	C
70-72	C-
67-69	D+
60-66	D
0-59	F

Late Policy

All exams and assignments must be completed by the due date, except in the case of documented emergencies.

UWSP Policy COVID-19

Face Coverings:

- At all UW-Stevens Point campus locations, the wearing of face coverings is mandatory in all buildings, including classrooms, laboratories, studios, and other instructional spaces. Any student with a condition that impacts their use of a face covering should contact the [Disability and Assistive Technology Center](#) to discuss accommodations in classes. Please note that unless everyone is wearing a face covering, in-person classes cannot take place. This is university policy and not up to the discretion of individual instructors. Failure to adhere to this requirement could result in formal withdrawal from the course.

Other Guidance:

- Please monitor your own health each day using [this screening tool](#). If you are not feeling well or believe you have been exposed to COVID-19, do not come to class; email your instructor and contact Student Health Service (715-346-4646).
 - As with any type of absence, students are expected to communicate their need to be absent and complete the course requirements as outlined in the syllabus.
- Maintain a minimum of 6 feet of physical distance from others whenever possible.
- Do not congregate in groups before or after class; stagger your arrival and departure from the classroom, lab, or meeting room.
- Wash your hands or use appropriate hand sanitizer regularly and avoid touching your face.
- Please maintain these same healthy practices outside the classroom.

Class Policies and Procedures

Email Policy

Remember some faculty receive as many as 100 emails per day. Yours should be clear, concise, and professional so that your issues can be responded to effectively. Include the entire thread of an ongoing email conversation so that your instructor can recall the history of your issue without searching for other emails you have sent. Remember to include the class and section number in your email. Sign off with your first and last name. I will not open attachments without messages or messages that are illegible. I will endeavour to answer emails within one **business** day.

Disability Statement

Any student who anticipates they may need an accommodation based on the impact of a disability (including mental health, chronic or temporary medical conditions) should contact me privately to discuss your specific needs. Please continue to do so during the semester should your situation change, or if you need additional assistance due to the online format. Students are also encouraged to contact the DATC at 715-346-3365 or at datctr@uwsp.edu to seek further assistance. DATC will email me if you are already registered with their office.

Childcare and other caregiving responsibilities.

This is an entirely online class in odd circumstances. I recognize that schools are changing from face-to-face to virtual learning swiftly, and that the nature of the pandemic is such that our caregiving responsibilities may also change. I do not expect your children etc. to be completely invisible if you are present on Zoom!

Complete UWSP policies and procedures can be found on the university website or in the [student handbook](#).

Academic Integrity

Academic integrity is central to the mission of this institution. UWSP 14 defines academic misconduct as any “action which a student:

1. seeks to claim credit for the work or efforts of another without authorization or citation;
2. uses unauthorized materials or fabricated data in any academic exercise;
3. forges or falsifies academic documents or records;
4. intentionally impedes or damages the academic work of others;
5. engages in conduct aimed at making false representation of a student’s academic performance;
6. assists other students in any of these acts.

UWSP 14 allows for disciplinary sanctions that range from an oral reprimand to suspension or expulsion from the University. You can obtain a copy of the full academic misconduct policy through the Student Services office.

I recognize that the rules regarding academic misconduct can sometimes be confusing for students with respect to specific assignments or course work. If you have questions, I encourage you ask me. I am always prepared to help clarify any aspects of the work for this course that may be confusing. If you have questions or concerns about a particular assignment, you should talk with me before the assignment is submitted. Ignorance or misunderstanding of the UW System policy will not serve as a valid excuse for academic misconduct.

<https://www.uwsp.edu/dos/Documents/UWSP14-Final2019.pdf>

Additional Resources

Tutoring	Advising	Safety and General Support	Health
Tutoring and Learning Center helps with Study Skills, Writing, Technology, Math, & Science. 018 Albertson Hall, ext 3568	Academic and Career Advising Center, 320 Albertson Hall, ext 3226	Dean of Students Office, 212 Old Main, ext. 2611	Counseling Center, Delzell Hall, ext. 3553. Health Care, Delzell Hall, ext. 4646

UWSP Service Desk

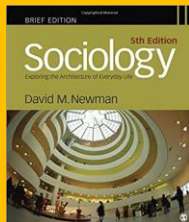
The Office of Information Technology (IT) provides a Service Desk to assist students with connecting to the Campus Network, virus and spyware removal, file recovery, equipment loan, and computer repair. You can contact the Service Desk via email at techhelp@uwsp.edu or at (715) 346-4357 (HELP) or visit this [link for more information](#).

NOTE: Office 365 is available free for all students. Follow this [link](#)

Course schedule

Week	Topic	Reading Assignment
1	Introduction	Chapter 1
2	Thinking Sociologically	Chapter 2
3	Knowledge	Chapter 3
4	Culture	Concepts, Indicators, Reality* Chapter 4 Body Ritual of the Nacirema*
5	Socialization	Chapter 5
6	Socialization EXAM 1 Due FRI 5pm	Tiger Girls* Working the Code*
7	Presentation of self	Chapter 6 Blue Chip Blacks*
8	Family	Chapter 7 Radical Idea of Marrying for Love*
9	Deviance	Chapter 8 Watching the Canary*
10	Class, stratification and inequality	Chapter 10
11	Class, stratification and inequality EXAM 2 Due Fri 5 pm	People of Walmart*
12	Organizations	Chapter 9
13	Race and Ethnicity	Chapter 11 Racial and Ethnic Formation*
14	Sex and Gender	Chapter 12 Black Women and New Womanhood* Still a Man's World*
15	Demography Social Change	Chapter 13 Chapter 14 Challenging Power*
16	EXAM 3 Due Fri 5 pm	

Readings that are a Chapter # are in the regular textbook



Readings marked * are in the reader

